

Bridgman Elementary School

Address:

3891 Lake Street
Bridgman, MI 49106

Phone:

(269) 466-0241 or 466-0258 /
Fax #: 269-466-0248

School Hours:

Building Opens at 7:20 a.m.
Classes run 7:45 a.m. to 2:50 p.m.
Half Day Dismissal at 11:10 a.m.

School Office closes at 3:30 p.m.

Inclement Weather 2-Hour Delay -

Building opens at 9:20 a.m. (no breakfast served)

Classrooms Open - 9:35 a.m.

Tardy Bell - 9:35 a.m.

Classes Dismissed - 2:50 p.m.

Grades:

Progressive 5 through 4th

School Colors & Mascot:

Orange & Blue - Bridgman Bees

Average Class Size: 22 students

Average Yearly Enrollment: 350

FACULTY INFORMATION

Outstanding and Cooperative staff

Percentage of Faculty have advanced degrees

Staff Development Programs

Title I Paraprofessionals & At-Risk Assistants

Library Assistant

Community Support / Loyalty & Spirit

Variety of Educational Services

OUTSTANDING FEATURES & PROGRAMS

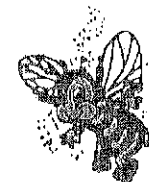
School Counseling Program
Small Group Counseling Programs
Multi-Purpose Center
Elementary Certified Art Teacher
Computer Lab
Educational Field Trips
Reading Incentive Program
Accelerated Reader Program
March Reading Month Activities
Title I Lab with Teacher & Assistants
Full-Day Progressive 5's Program
Full-Day Kindergarten
Breakfast Program
Junior Achievement/Career Education
PTO-sponsored Assemblies
"Pennies for Patients" Cancer Drive
Recycling Program
Annual Field Day Events
Whole-Group instruction with individualization

Mentors/Tutors
Positive Classroom discipline
Media Center
Elementary Certified Music Teacher
Citizenship Lessons
Peer to Peer K'Nex Mentoring Program
Leaders as Readers
School Yearbook
Annual Fine Arts Week
Music Program Performances
Annual All-School Theme Luncheon
Fire Protection Program
Annual Food Drive for Local Food Pantries
Swimming as part of Physical Ed. Curriculum
Back-To-School Ice Cream Social
Annual Christmas Drive for Humane Society
Jump-A-Thon (American Heart Association)

EXTRA-CURRICULAR OFFERINGS

Heavy Metal Jump Rope Club
Science Olympiad
Mini Bees Basketball Program
Mini Bees Cheerleading/Poms Program
Student Council
Art Contest participation
School Plays
School Variety Show
"Young Rembrandts" Art Program

Book Fair
Jump Rope Club
Jog Club
Community Soccer Leagues
Community Baseball/Softball Leagues
Community Floor Hockey Leagues



COMMUNITY INVOLVEMENT

Active P.T.O.
Bridgman Foundation for
Educational Excellence
Fire Prevention Program
Open gym times
Girl Scout/Brownie Meetings
Boy Scout/Cub Scout Meetings
Police Safety Program
Adult Recreation Facility
Involvement of Outstanding
Resource People
Strategic Goal Planning
Partners In Education
March Reading Month-Leaders as
Readers
Parent Volunteer Program
Career Visits
Fine Arts Week
Bridgman Public Library
Junior Achievement



BRIDGMAN ELEMENTARY SCHOOL



3891 Lake Street
Bridgman, MI 49106
(269) 466-0241
Check out our Web Site at:

WWW.BRIDGMANSCHOOLS.COM

